

# FILTREAU™

◆ E X C E L L E N T ◆



## Manual

Excellent Line  
Filters  
English

# Symbolism and terms

## Warning symbols and/or signal words

The warning symbols and/or signal words below are covered in this manual:



### **Danger imminent due to electric shock**

Its meaning is that there is a danger due to electric shock. This could lead to serious or fatal injury and/or serious damage to the appliance or environment if safety instructions are not followed.



### **Risk situation due to UV-C radiation**

The significance of this is a risky situation due to UV-C radiation. If the safety instructions are not followed, the possible consequence is serious eye injury and/or skin damage.



### **Warning**

The significance of this is a risky situation. Failure to follow the safety instructions may result in average or light bodily injury and/or damage to the appliance or its surroundings.



### **Danger to hands due to rotating parts**

This indicates a hazard caused by rotating parts that can result in severe injury to the hands or fingers. If safety precautions are not followed, the potential consequence may include serious cuts, crushing, or even amputation of fingers or hands.

### **Note!**

Its meaning is; caution, relevant information or advice/tips.

### **Illustration**

This is a reference to the relevant illustration ... on page .... of this manual.

## Meaning of symbols on the product

The warning symbols and/or signal words below are covered in this manual:



### Recycling

The appliance must not be disposed of together with normal household waste. It should be disposed of at an official collection point, such as the Environmental Centre, or at the point of sale when purchasing a new similar product. It is advisable to follow the rules applicable in your country regarding the separation of electrical and electronic products/waste. Separate collection and recycling is better for the environment, public health and helps reduce waste.



### EU norms

This device complies with current EU standards.

## Warranty conditions

Material and construction defects are covered by a 2-year manufacturer's warranty. The product must be delivered for warranty including all parts and the original proof of purchase showing the date of purchase. A product with incomplete parts or missing proof of purchase will not be considered for warranty! The device will be inspected upon receipt and a decision will then be made as to whether it will be repaired or replaced.

For a device that has been repaired or replaced under warranty, the remaining time of the original warranty period applies. Carefully read the instructions relating to installation, use and maintenance. Damage due to improper use, contamination or lack of cleaning of the appliance, glass breakage and damage to the cord and screen, are not covered by warranty.

Keep the proof of purchase at all times, no warranty claims can be made in the absence of the proof of purchase!

# FILTREAU Excellent

All relevant information and any warnings concerning the product are contained in these operating instructions. By following described instructions, dangers as well as repair costs and downtimes can be reduced. In addition, the reliability and service life of the product will be increased. Please read this information thoroughly before installing the Filtreau Excellent drum filter and keep the instructions with the product!

If there are any uncertainties regarding the operating instructions, always contact your Filtreau Excellent dealer.

We hope you enjoy your Filtreau Excellent drum filter.

## Operation

The Filtreau Excellent drum is a low-maintenance filter system that ensures healthy, clear pond water with little maintenance for the user. The completely automatically controlled drum filter, combined with the Moving-bed/bio chamber makes the filter suitable for (koi) ponds from 10,000L to as much as 200,000L! The system comes standard with inlets 110mm and outlets 110mm. This allows for a water flow of no less than 20m<sup>3</sup>/h to 100m<sup>3</sup>! (Depending on the type of drum filter).

### Safety

Follow the safety instructions below at all times for the safe use of the product.

Failure to follow these instructions may result in danger to both people and the environment.



1. Do not switch on the lamp until it is connected, installed fully shielded and fully submerged. **Never look into the**

#### **UV-C lamp!**



2. This device must be powered via an earth leakage circuit breaker (ALS) with a rated leakage current of no more than 30 mA.
3. Check that the voltage indicated on the label matches the mains voltage.
4. This product should be connected to a grounded outlet.
5. Protect the socket and plug from moisture. Using a drip loop, ensure that water cannot enter the socket and control box through the power cord.
6. Do not use the appliance if the quartz glass, appliance, cord or plug is damaged. Replace the quartz glass or offer the appliance to your dealer for repair or recycling.
7. Be careful when combining water and electricity. Do not operate with wet hands. Dry your hands before performing maintenance.
8. Before maintenance, always switch off all devices in the pond. Unplug the plug(s).
9. **NOTE!** The UV lamp gets hot. Let the lamp cool for at least 10 minutes before installing or servicing it.
10. Make sure the UV lamp is always fully submerged below the water level. If the lamp is not fully submerged, it will overheat and fail.
11. In case of (risk of) frost, appropriate precautions should be taken to prevent freezing.
12. Children should not play with this appliance. Children should not clean or maintain the appliance unsupervised.
13. Changes to the device may affect safety. This will also void the warranty.

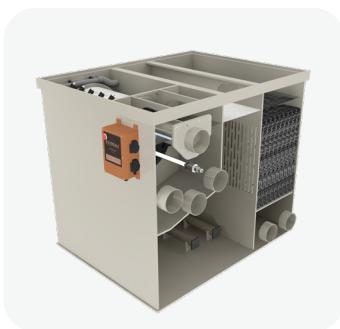
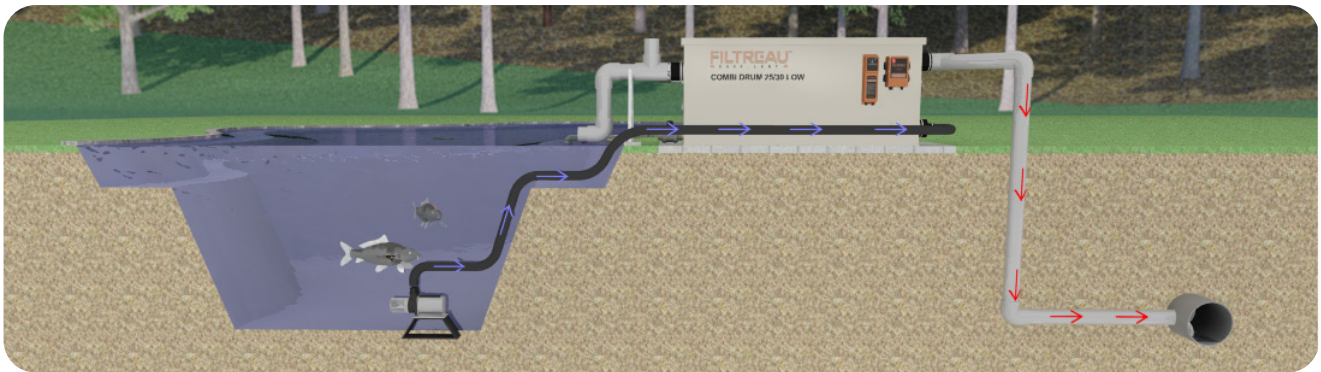
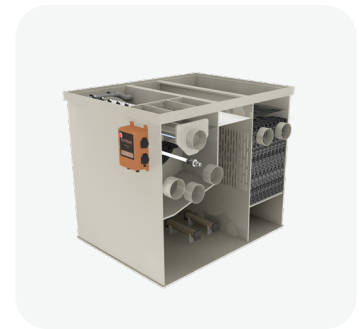
Wimaca International is not liable for any damage, problems or accidents caused by misuse of this device.

# Placing PUMP and GRAVITY

## Installation of drum filter pump-fed system

For the drum filter pump-fed set-up, the pond pump is placed in the pond at the bottom. The difference with a pump-fed system is that it is easy to connect to an existing pond. The pond pump is placed in the deepest part of the pond. The pond pump pumps the (polluted) pond water through a hose to the drum filter.

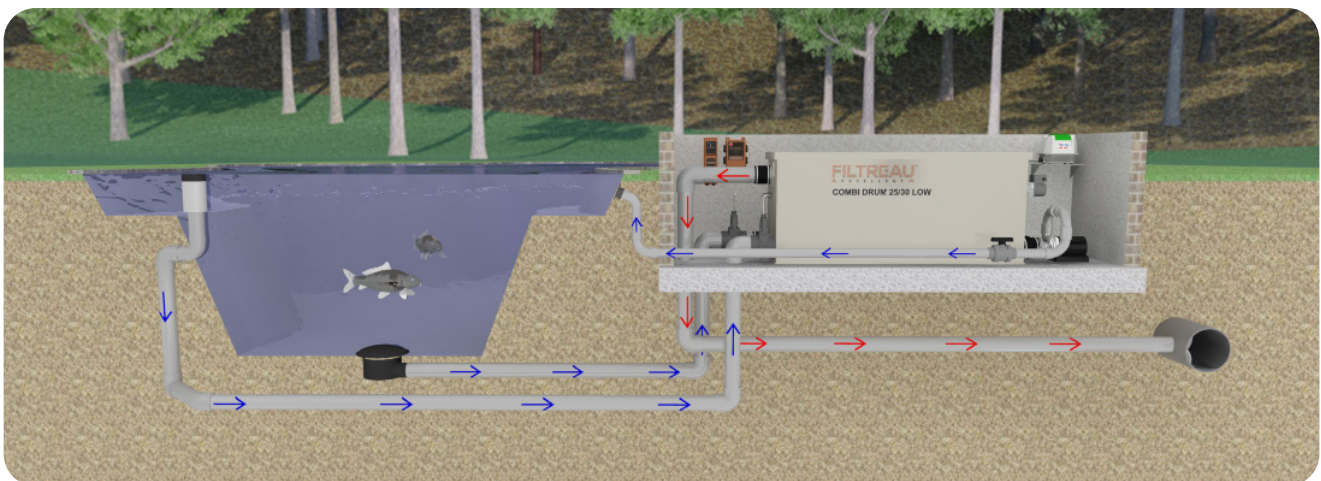
The floater is not adjustable and is adjusted to the correct position from the factory.



## Installation of drum filter gravity system

For gravity drum filters, the pond pump is installed outside the pond. With a gravity drum Filter, the filter is installed  $\pm 14$  cm above the pond water level. The advantage of a gravity system is that the dirty pond water is filtered first and only then reaches the pond pump. The dirt contained in the pond water will be filtered out of the pond water by the drum filter.

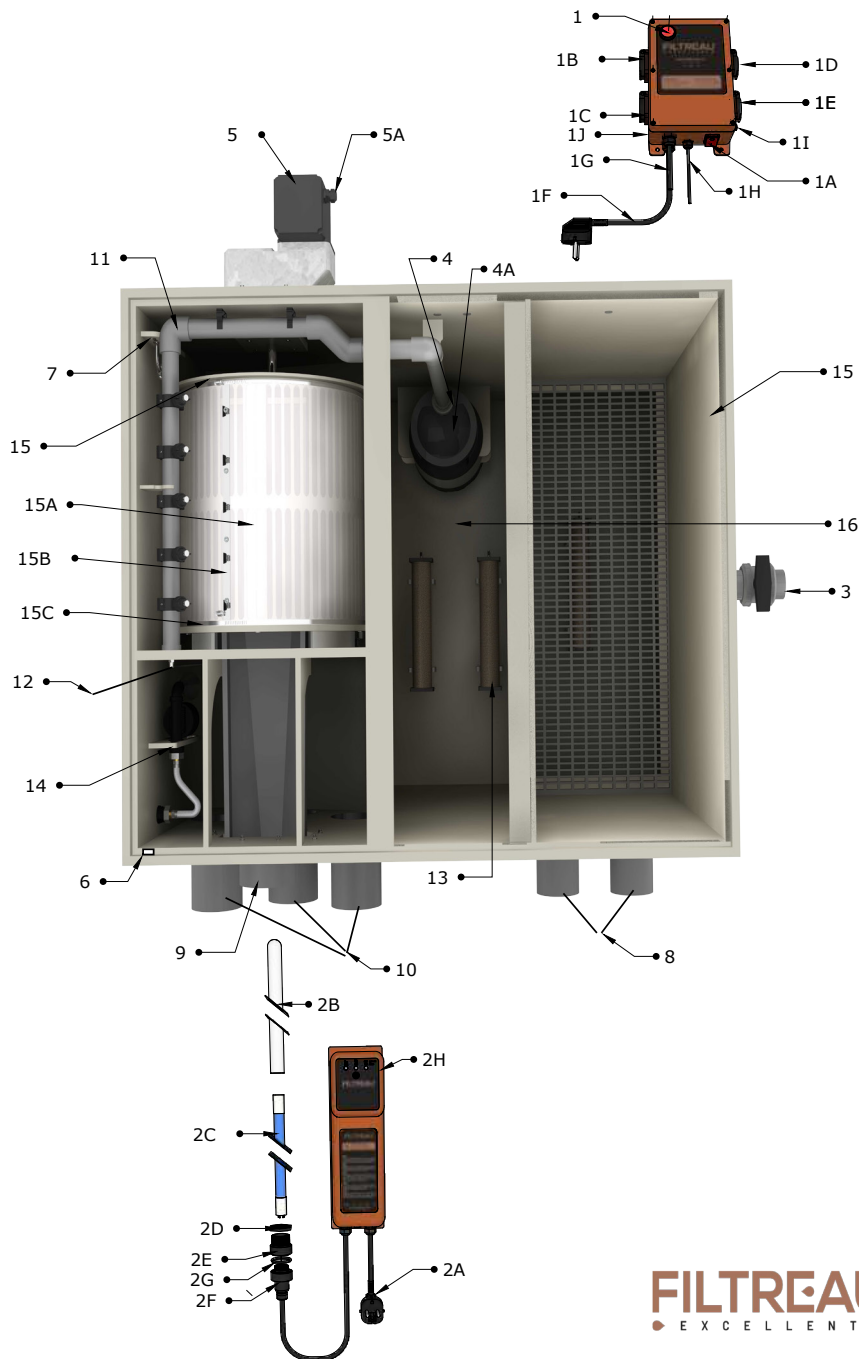
When the float is adjusted deeper, the flushing cycle will be delayed. It will therefore take longer for the filter to clean itself.



# Excellent Line

## Technical drawing Excellent Line

Illustration 1.




### Parts

- 1** - Manual flush button
- 1A** - On/off button
- 1B** - UVC socket
- 1C** - Rinse pump socket
- 1D** - Pump socket
- 1E** - Motor socket
- 1F** - Plug control box
- 1G** - Plug floater
- 1H** - Plug cover protection
- 1I** - Fuse 1
- 1J** - Fuse 2
- 2A** - Plug UVC
- 2B** - Quartz glass
- 2C** - Replacement lamp
- 2D** - Stainless steel nut
- 2E** - stainless steel quartz glass holder
- 2F** - Stainless steel lamp holder
- 2G** - O-ring
- 2H** - Reset button
- 3** - Ball valve
- 4** - Flushing pump
- 4A** - Plug flushing pump
- 5** - Motor
- 5A** - Plug motor
- 6** - Magnet cover protection
- 7** - Stainless steel floater
- 8** - Return 110mm
- 9** - Flush gutter
- 10** - Inlet 110 mm
- 11** - PVC tube / stainless steel nozzle
- 12** - Stainless steel nipple
- 13** - Air stone
- 14** - Water level controller (optional)
- 15** - Skeleton drum
- 15A** - Strainer panel
- 15B** - Stainless steel strip
- 15C** - Stainless steel hose clamp (2) left and right
- 16** - Bio chamber 1
- 17** - Bio chamber 2

**FILTREAU™**  
EXCELLENT

## Instructions - Installation of Filtreau Excellent filter

See illustration 1.

1. Determine the exact location of the filter and place it on a stable, level subfloor.
2. Place the filter behind or in front of the pond pump, at a designated place (behind pond pump=pump fed / in front of pond pump=gravity) and remove the cover from the housing. Keep in mind that the maximum water level of the pond is never higher than the max. water level in the filter. Max. water level = 1cm below the dirt outlet/gutter.
3. Connect the air pump (min. 3600L/hour) to the grommet **(13)**.
4. Connect the outlets **(10)** from the filter through to the return line of your pond.
5. Gravity set up; Fill pond until maximum water level is reached. Max water level is indicated in the filter under the type number.
6. Replace the cover on the housing..
7. Now insert the plugs of the devices into the correct sockets on the control box see indications on control box itself.
8. Connect the cable of the float to the cable of the control box. (DMX connection)
-  9. Now insert the plug **(1F)** of the control box into the appropriate socket and switch on by pressing the switch **(1)** button.
10. Wait until the pond pump has filled the entire filter. (make sure all valves in the water circuit are open)
11. Now check all pipelines, hoses, connections etc. for leaks.
12. Hold the push button **(1)** Pressed for 10 seconds to activate the motor and rinse pump.
13. Now again check all pipelines, hoses, connections etc. for leaks.
14. If the drum is soiled, the rinsing cycle (cleaning mode) is automatically repeated.
15. For longer waiting times, you can adjust the height of the float. (adjustable only with Gravity set up)



Note: In the initial period after installing/using the filter, the flushing cycle may be very short. This will decrease as the fouling / floating debris decreases, so will the flushing cycle. When adjusting the float / opening the lid (A), the power supply is always disconnected by the lid guard!

All Filtreau excellent filters are equipped with a 120micron polypropylene filter panel.

## Maintenance & disassembly

See illustration 1.

The device needs maintenance at least once a month. During maintenance, the power supply must be disconnected. The filter panel should be checked for any wear and tear and any accumulated dirt in the drain channel should be removed.

The UV-C lamp should be replaced when the lamp on the timer lights orange and the quartz glass should be cleaned of limescale to maintain optimum filter performance. UV-C radiation kills algae, bacteria and viruses (diseases). The powerful UV-C radiation also keeps the sieve panel free of bio-film. Thus, the sieve panel becomes saturated less quickly and ensures a longer rinsing cycle interval. This results in significantly lower water consumption.



1. Disconnect the power supply and close the water circuit.
2. Remove the cover from the housing.
3. Ensure that water can drain from the housing.
4. Rotate the entire drum **(15)** one rotation around by hand and check for wear. If necessary, you can adjust the strainer panel **(15A)** replaced (see further headline; **Replace Strainer Panel**).
5. Also check the drain channel **(13)** on any accumulated wire algae/dirt..
6. For changing the UV-C lamp see further headings; **Replace UV-C Lamp**.

# Floater

## Technical drawings 300045 stainless steel floater

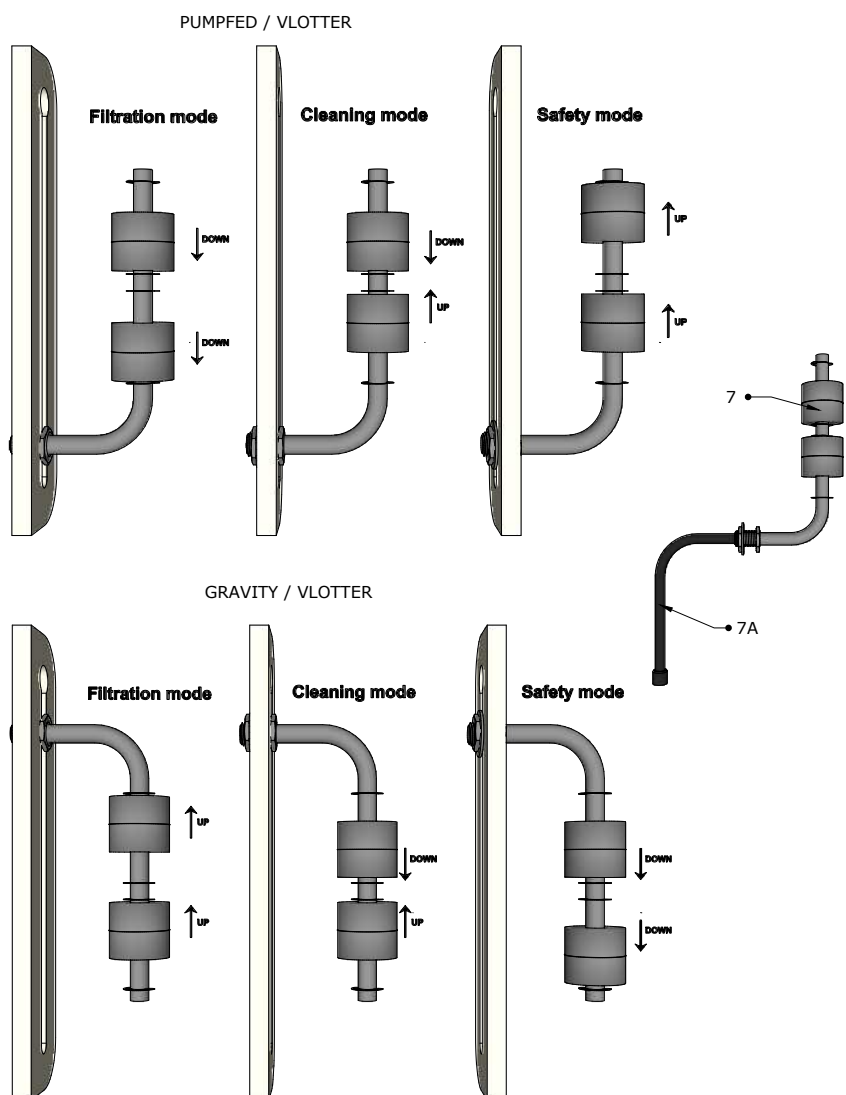
### Illustration 2.

The float switch has several circuits, the exact circuits with their meanings are explained below.



### Safety first

Before using/installing the system, read the entire manual carefully! If in doubt, always consult a recognised installer.



### Floater switch

#### Filtration mode:

UV-C + circulation pump switched on

#### Cleaning mode:

UV-C + circulation pump + rinse pump + motor switched on

#### Safety mode

Everything is disabled / level security

**7** - Floater

**7A** - Cabel

**FILTREAU™**  
EXCELLENT

3000045 RVS

Vlotter



# Excellent Line

## Replace Strainer Panel

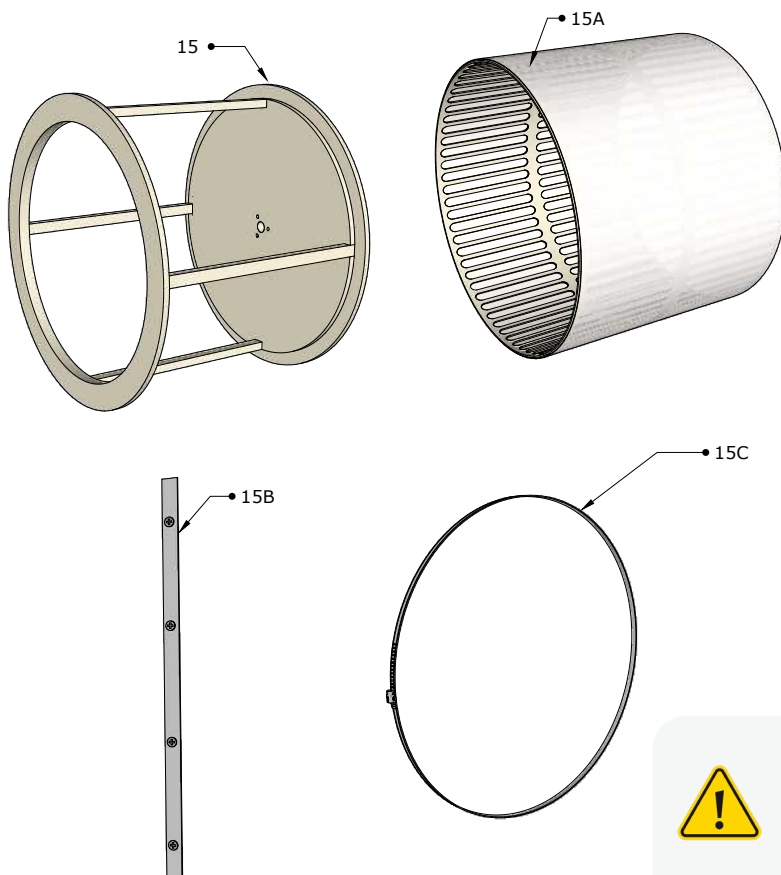
See illustration 1 & 3.

When you notice that the sieve panel (15A) shows signs of wear, it is important to replace it as soon as possible with a new sieve panel (15A). This will maintain the optimal performance of the filter.

- ⚠ 1. Disconnect the power supply and shut off the water circuit.
2. Remove the housing cover.
3. Ensure that the water can drain from the filter.
4. Manually rotate the drum (15) until the mounting strip (15B) and hose clamps (15C) are facing upwards.
5. Unscrew the screws from the mounting strip (15B).
6. Disconnect the hose clamps (15C).
7. Remove the drain trough (9) by loosening the mounting bolts at the front.
8. Now remove the sieve panel (15A) and replace it with a new one.
9. Reattach the hose clamps (15C) and the mounting strip (15B). Then check that everything is correctly secured.
10. Place the cover back on the housing.
11. Now plug the power cord back into the socket and hold down the push button (1) for 10 seconds. The motor and rinse pump will now be reactivated.

⚠ Note: It must not be hosed down with a high-pressure cleaner!

Illustration 3.



### Parts

- 15 - Skeleton drum
- 15A - Strainer panel
- 15B - Stainless steel strip
- 15C - Stainless steel hose clamp (2)  
left and right



### Safety first

If in doubt, always consult a recognised installer.

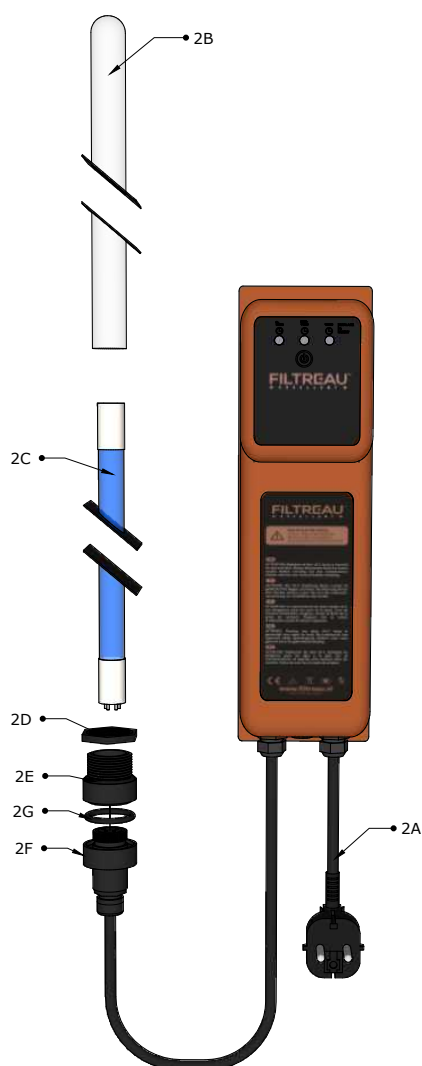
## Excellent Line

### Replace UV-C lamp

Illustration 4.

- ⚠ 1. Disconnect the power supply and shut off the water circuit.
2. Remove the housing cover.
3. Ensure that the water can drain from the filter.
4. Loosen the locking nut (2F) and disconnect the UV-C lamp (2C) from the lamp holder.
5. Carefully remove the quartz glass (2B) from the fitting (2E).
6. The quartz glass (2B) can be cleaned with a suitable cleaning agent. After cleaning, rinse the quartz glass (2B) thoroughly (to avoid scratches, use only a soft cloth!).
7. After cleaning, place the quartz glass (2B) back into the fitting (2E). Ensure that the O-rings (2G) are properly seated.
8. Insert the new UV-C lamp (2C) into the lamp holder and slide the assembly further into the quartz glass (2B).
9. Hand-tighten the locking nut (2F) back onto the fitting (2E).
10. Replace the cover on the housing and plug the power cord back into the socket.
11. Hold down the reset button (2H) on the UV-C ballast for 5 seconds.

⚠ Note: for inox parts, do not use iron tools



#### Parts

- 2A - Plug
- 2B - Quartz glass
- 2C - Replacement lamp
- 4D - Stainless steel nut
- 2E - Stainless steel glass holder
- 2F - Stainless steel lamp holder
- 2G - O-ring
- 2H - Reset button



#### Safety first

If in doubt, always consult a recognised installer.

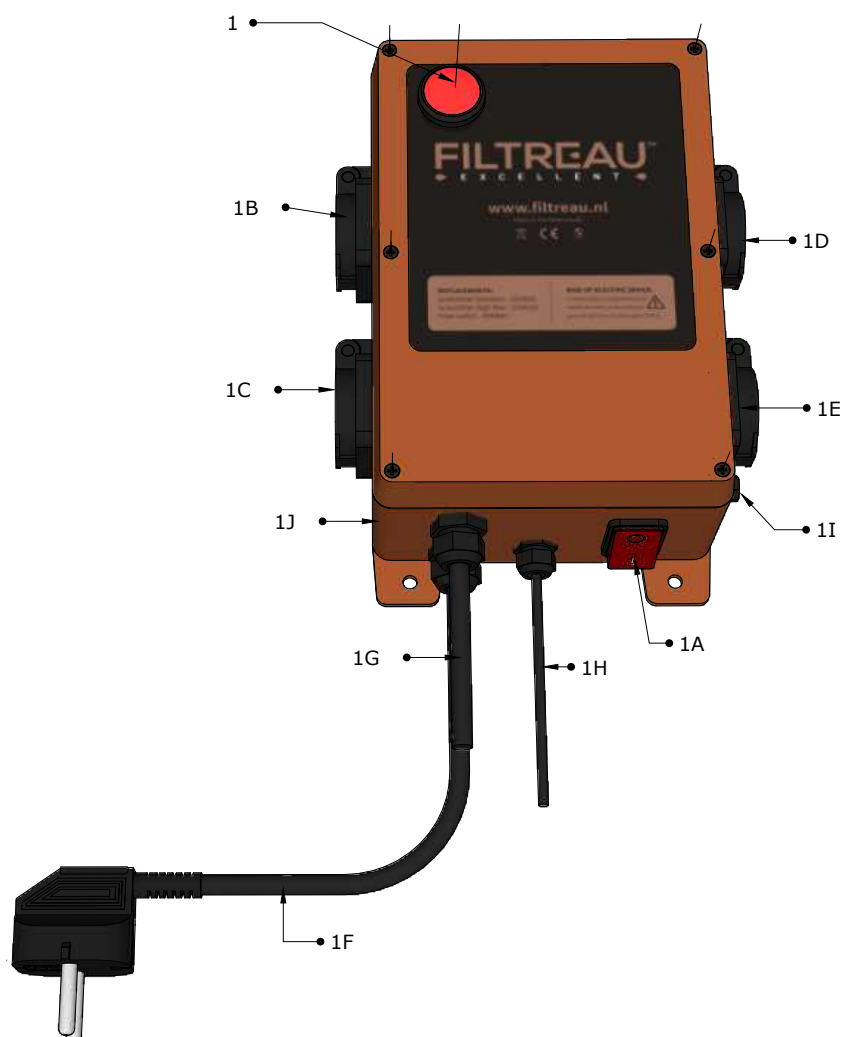
## Excellent Line

### Technical drawing Excellent Line Control Box

Illustration 5.

The control box consists of the following functions:

1. To operate the control box, check the connection of fuses (**1I**) and (**1J**). Then insert the plug (**1F**) into the socket.
2. The box has both automatic cleaning by means of a floater (**1G**) and manual operation, consisting of a manual push button to rinse.
3. The rinsing time of the drum is 10 seconds.
4. The rinsing level Gravity is adjustable. However, the flush level Pump-fed is adjustable to 2 positions.
5. In addition, the control box has sockets to which the flushing pump (**1C**), pond pump (**1D**), drive motor (**1E**) and UVC H-O 80watt RVS (**1B**) can be connected.
6. If the dry-running protection is switched off, it restarts after 30 seconds to ensure the quality and service life of the UVC lamp.
7. When the flush protection switches on, the control box falls into failure after 5 minutes. One has to reset it manually with the on/off button. (**1A**)
8. As soon as the filter cover is removed, the control box switches off (magnetic protection). (**1H**)



### Parts

- 1** - Manual rinse button
- 1A** - Power button
- 1B** - UV-C
- 1C** - Flush pump
- 1D** - Pump
- 1E** - Motor
- 1F** - Plug socket
- 1G** - Plug floater
- 1H** - Plug cover protection
- 1I** - Safety fuse 1
- 1J** - Safety fuse 2

# FILTREAU™

The best solution for water pollution

**Address details:**

Ekkersrijt 7418  
5692HK Son  
The Netherlands

**Contact details:**

Phone: +31(0)499-462929  
E-mail: [info@wimaca.nl](mailto:info@wimaca.nl)

**Website:**

[www.filtreau.nl](http://www.filtreau.nl)